

spotlight solar.®



Beautiful Solar Structures



People know solar is beneficial. Now it can be beautiful, too. Installed in visible places, Spotlight Solar structures make clean energy and signal your care for the environment.



## Show Your Solar

People love solar technology, but since it hides on flat rooftops or in distant fields, it goes unnoticed. Beautiful solar structures make a statement. Designed to complement a rooftop solar system or other environmental investments, they remind people of your positive impact.





## Return on Visibility



Add the value of visibility – the benefit of showing your clean energy stance to employees, tenants, and customers. Engage visitors with shade, power outlets, and the larger story of your energy impact. You'll inspire people to follow your lead.

# Designed to Engage

Spotlight Solar structures come in four styles, with flexibility to make them uniquely yours. Each is artistic, but none is an art project. They are engineered products, with a 10 year warranty.

- Customize with seating, power outlets, lighting, signs and graphic wraps
- High performance coating in 200 colors
- Wind speeds up to 175 MPH
- Assembly in one day

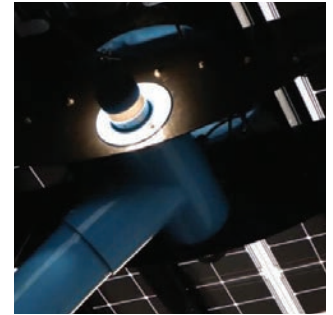


Lift

Curve

Trestle

Industry






22' tall, 29' wide  
12 solar panels  
Adjustable arms and arrays

*Options*

- lighting
- table with power outlets
- signs and branding

**Lift** is an exuberant expression of clean energy. Its dynamic, sculptural form looks great from every angle. And modular design provides flexibility – position arms and solar arrays to strike just the right balance.



**Curve** is both art and a clean energy machine. Its design is approachable and fresh. Curve's solar array orients in any direction you decide – beaoning people into the shade of beautiful solar technology.

17' tall  
110 ft of shade  
6 solar panels  
Adjustable tilt and twist

*Options*

- lighting
- table with power outlets
- seating with power outlets
- signs and branding

**Trestle** has a strong, deliberate aesthetic that recalls heavy industry and railroads. It's at home in architectural settings of adaptive reuse and warehouse districts. Trestle's scale provides a sense of place, making it ideal for courtyards and seating areas.




14' tall  
30' wide shaded area  
18 solar panels  
Adjustable tilt

*Options*

- lighting
- table with power outlets
- signs and branding





**Industry** is designed to suit a range of architectural styles and bring solar technology to human scale. Industry creates a shady place for your visitors to appreciate your sustainability efforts.

13' tall

18' Span

8 solar panels

Adjustable

*Options*

- lighting
- table with power outlets
- signs and branding

“ Spotlight Solar is helping us make a statement we hope will inspire many other communities. - Robbie Ferris, CEO, SfL+a Architects We were able to add a beautiful, signature element to our campus while educating the public about the benefits of solar energy ... the solar trees have become a landmark. - Tim Brown, President, Tracy Aviary These five distinctive solar trees an interactive component that inspires our visitors to learn more about renewable energy. - Therrin Protze, COO Kennedy Space Center Visitor Complex Through this partnership with Palm Beach International Airport, we show millions of people that Florida is truly living up to its name as the Sunshine State. - Matt Valle, Vice President, Florida Power & Light Our striking solar tree signals our energy and efficiency efforts. Tenants and shoppers prefer to come here because of our environmental stewardship. - George Stone, Developer, Clarksville Commons ”



spotlight solar®

Certified



Corporation

Spotlight's pioneering work makes solar more visible to tens of millions of people. We're ready to partner with you to advance the adoption of solar energy.

[info@spotlightsolar.com](mailto:info@spotlightsolar.com)

919.914.0055